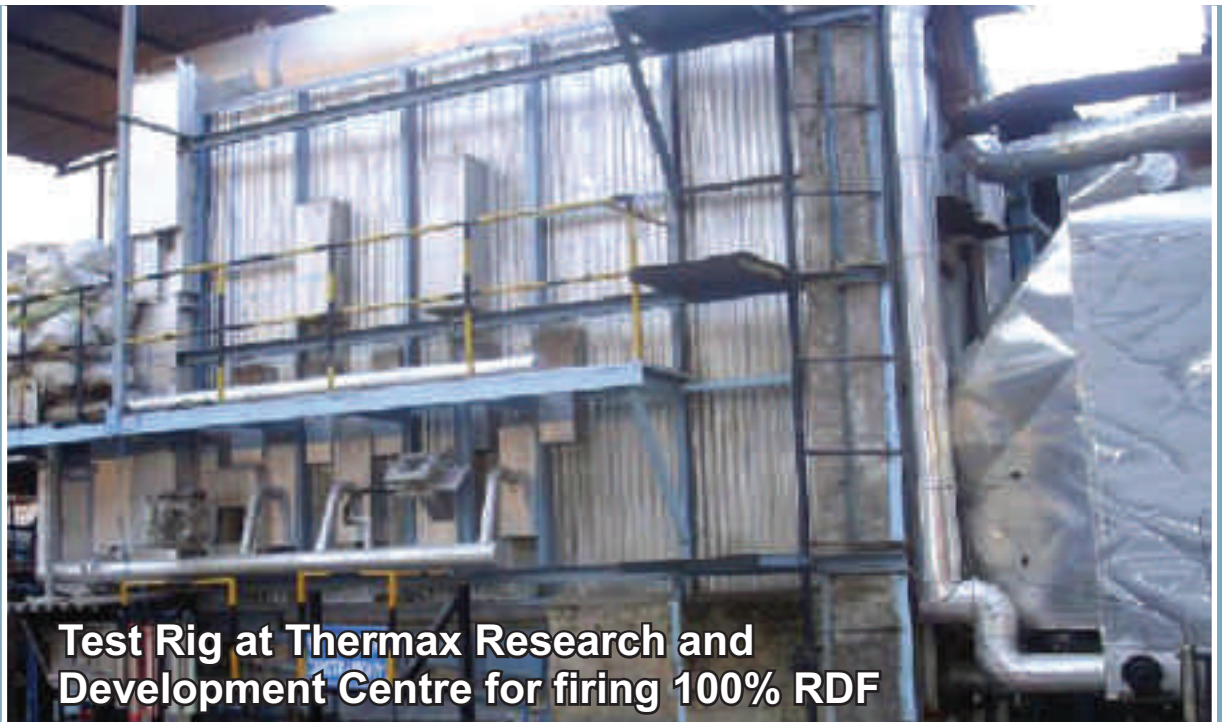
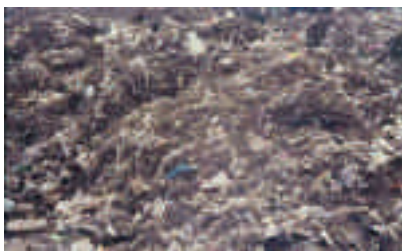


WASTE to
ENERGY -
MSW/RDF
fired Boiler



Test Rig at Thermax Research and Development Centre for firing 100% RDF

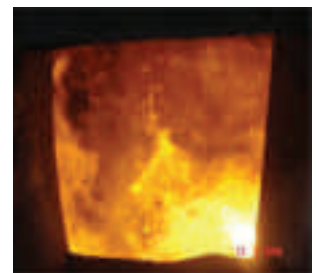
Designed & Engineered for excellence



- Successful In-house trials conducted while firing 100 % MSW/RDF.
- Based on Thermax's rich experience in firing various biomass, spent wash, paper sludge and other industrial wastes.
- Specially designed furnace to ensure complete combustion
- Hydraulic Ram Feeder provided considering fuel size variation
- Specially designed automated soot removal system

Specially designed Pusher Grate

- Can handle wide variation on fuel type, moisture & particle size
- Complete combustion due to tumbling action enforced on fuel, reduced suspension burning due to silent combustion
- Positive movement of fuel over the grate minimizes clinkering and blockages
- Ram feeding system ensures uniform distribution of fuel onto the grate
- Special grate and air plenum sections provided to ensure better distribution / control
- Carefully chosen grate area ensures consistency in combustion for varying fuel characteristics
- Low power requirement with simple control on hydraulically operated system
- No rotating parts, hence enhanced life and Robust construction
- Low maintenance requirements & high operating reliability



Thermax Limited
Boiler & Heater Group

D-1, MIDC, R. D. Aga Road, Chinchwad, Pune: 411 019 Tel.: +91 20 66126464 Fax: +91 20 27479200
E-mail: info.bnh@thermaxindia.com Visit us at: www.thermaxindia.com