

Cooling & Heating Division

STEAM SEPARATOR - PN 25

TSS



STEAM SEPARATOR - UNIQUE DESIGN

MAIN FEATURES

Application: Suitable for air, gas and steam applications.

Performance: The Wright-Austin Type T entrainment separator, when properly sized, installed and drained, will remove 95% of all liquid droplet and solid particle.

Operation: Moisture-laden gas enters the inlet of the separator where it is deflected in a centrifugal downward motion. The entrained moisture is thrown to the outer wall and is separated by reduction in velocity. The separated liquid falls below the "Vortex Containment Plate" (VCP) where it cannot be carried away by dry air/ gas/ steam. Dry clean steam/gas is drawn from the vessel center and it flows upward through the outlet of the separator.

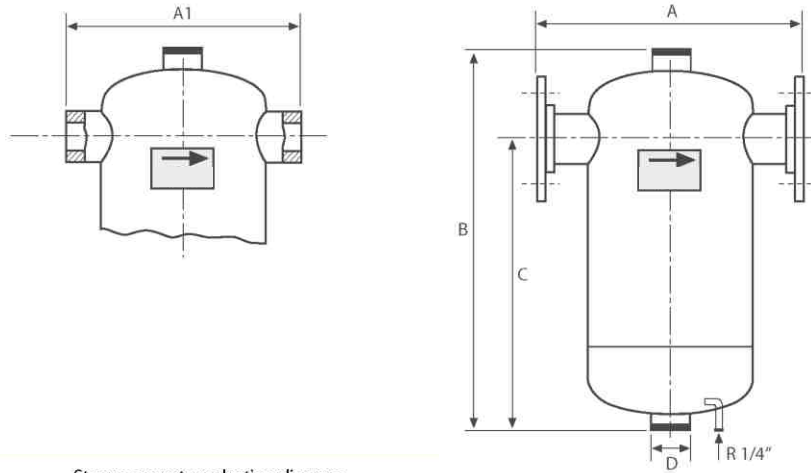
ASME Code Construction: These type T separators are of welded steel construction in accordance with section 8. Division 1 of the ASME Code for unfired pressure vessels. Inlet and outlet connections can be rotated radially upon request.

OPERATING CONDITIONS

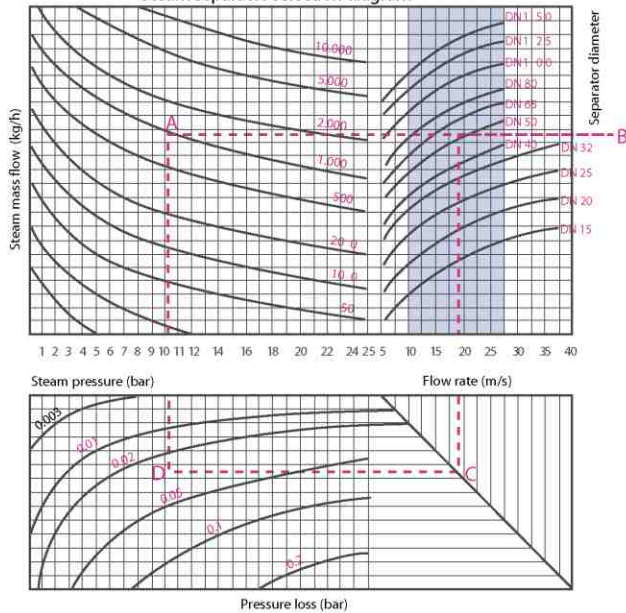
DN	Max. Working Pressure (bar)	Max. Working T emp. (°C)
15 - 80	25 (Steam)	228
100 - 150	21 (Steam)	217
15 - 150	17 (Air)	50

Connection	Flanged
Material	Carbon steel
DN	15-20-25-32-40-50 65-80-100-125-150-200

DIAGRAM



Steam separator selection diagram



HOW TO USE THE DIAGRAM

- 1 - 10 bar steam pressure and 1000 kg/h mass flow form A- D line.
- 2 - Extend A- B line horizontally.
- 3 - Any separator are intersecting with the A- B line in the shaded area will be working 100% efficiently (DN 50).
- 4 - Flow rate is determined by B- C vertical line (19 m/s).
- 5 - Pressure loss is established by intersecting A- B line to C- D line (0.03 bar).
- 6 - Separator; should be chosen by determining the flow rate line diameter and pressure loss.

DIMENSIONS

DN	A	A1	B	C	D
15	180	120	324	242	R 1/2"
20	230	150	389	298	R 1" X 1/2"
25	230	160	384	306	R 1" X 1/2"
32	250	200	426	315	R 1" X 1/2"
40	300	220	467	346	R 1" X 1/2"
50	300	220	493	384	R 1" X 1/2"
65	400	-	616	481	R 1 1/2" X 3/4"
80	450	-	683	520	R 1 1/2" X 3/4"
100	500	-	782	589	R 2" X 1"
125	600	-	937	725	R 2" X 1"
150	600	-	1037	817	R 2" X 1"
200	700	-	1210	968	R 2" X 1"
250	850	-	1750	1350	R 2"
300	950	-	1900	1450	R 2"
350	1000	-	2000	1500	R 2"

Special inspection and certification available on request

In view of our constant endeavor to improve the quality of our products, we reserve the right to alter or change specifications without prior notice.



Sustainable Solutions in
Energy & Environment

COOLING & HEATING DIVISION

Services SBU - FEMS

D - 13, MIDC Industrial Area, R. D. Aga Road,
Chinchwad, Pune 411 019. INDIA
Tel.: +91-20-2747 5941
Fax: +91-20-2747 7080
E-mail: info.c&hservices@thermaxindia.com

AHMEDABAD 380 006

Tel.: (079) 2657 5408 / 5341 / 7073
Fax: (079) 2657 7270
E-mail: mambiar@thermaxindia.com

BANGALORE 560 020

Tel.: (080) 2346 7761 - 64
Fax: (080) 2346 7760
E-mail: adminblr@thermaxindia.com

CHENNAI 600 018

Tel.: (044) 2435 3831 - 34
Fax: (044) 2435 3841
E-mail: chennaidivsupp@thermaxindia.com

HYDERABAD 500 482

Tel.: (040) 2339 6820, 2331 0254
Fax: (040) 2331 2335
E-mail: hyd_sec@thermaxindia.com

MUMBAI 400 016

Tel.: (022) 2204 5391, 2204 5324
Fax: (022) 2204 0859
E-mail: psecret@thermaxindia.com

NEW DELHI 110 057

Tel.: (011) 2614 5319, 2614 5701
Fax: (011) 2614 5311, 2614 8679
E-mail: psupport@thermaxindia.com

KOLKATA 700 016

Tel.: (033) 2282 6711 - 13
Fax: (033) 2282 6769
E-mail: mbiswas@thermaxindia.com

VADODRA 390 005

Tel.: (0265) 231 4802, 234 5442
Fax: (0265) 231 0051
E-mail: pbaroda@thermaxindia.com

www.thermaxindia.com

International offices at
Indonesia, Russia, Kazakstan, Saudi Arabia,
Malaysia, Bangladesh, Sri Lanka, Hong Kong, China
Thailand, UAE, Kenya, Nigeria, Brazil, UK, USA

Thermax Business Portfolio

Boilers & Heaters

Absorption Cooling

Air Pollution Control

Captive Power

Chemicals

Water & Waste Solutions